

ADDRESSABLE CONTROL PANEL – AM4000

DESCRIPTION

The **AM4000** is a fire alarm control panel equipped with microprocessor for addressable fire systems management; designed in conformity with **EN-54.2**. 4 loops that can manage 99 devices and 99 modules for each line, for a total of 396 detectors and 396 modules, input/output interface. **AM4000** is programmable also by software (PK-4000), that allow configuration, backup and printing function.

Available, on request, with MODBUS protocol.

MAIN FEATURES

- Microprocessed System.
- 4 lines.
- Each line can manage 99 detectors and 99 input/output modules.
- Graphic LCD display; 8 lines and 40 column (240x64 pixel).
- One RS-232 interface for serial printer (80 character for line).
- **TERMINAL EMULATION**: in alternative to the printer, on RS-232 communication line.
- One RS232 or RS422/485 interface for repeater connection.
- Software UP/DOWNLOAD: PK4000.
- Four access levels in accordance with EN54.2.
- Three password levels (operator, maintenance, configuration).
- Programmable message: points description in 32 characters; zones description in 32 characters.
- 150 zones and 400 logic group.
- CBE Control Equation (control-by event) for activation with logical operator (And,Or, Xor, ecc.).
- History log: 999 event in non volatile memory.
- Real time clock.
- Self-programming line with automatic recognition of connected device.
- Programming for different devices.
- Auto-recognition points with same address.
- Algorithm decision for fault and alarms.
- Alarm threshold programmable.
- Devices clean signalling.
- Low sensivity signalings.
- Automatic night/day sensibility change.
- WalkTest zone function.
- Keyboard with specific function key: evacuation, reset delay, buzzer tacitation, tacitation/restore sounder, reset.

OUTPUT

- Supervised sounder output.
- Free contact relay output:
 - general alarm;
 - general fault.



POWER SUPPLY

The fire alarm control panel is powered from the line and the normal functionality are assured by backup battery when main power is lost.

Supply features required:

- Voltage: 230 Vac single-phase + 10% / 15%.
- Frequency: 50 / 60 Hz.
- Current: 0.6 A.
- 24Vdc supply (27.6Vdc + 2%/10%, 100mV pp ripple max) 2,7A total, (panel supply, user outputs, supply for devices on loop communication).
- User output for external devices: sounder, buzzer. etc.
- Battery charger:
 - Voltage output: 27,6Vdc.
 - Current Output: 1A - 100mV pp max ripple. (with temperature compensation)
 - Batteries: 2 x 12V - 18Ah max.
 - Message: batteries exhausted, battery recharge fault, batteries release.

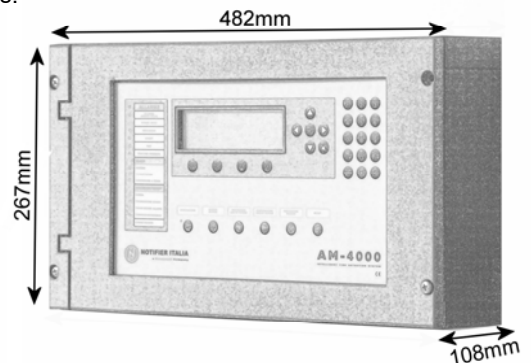
ENVIRONMENTAL CHARACTERISTIC

- Operating temperature: -5°C ÷ +40°C.
- Humidity: 10 ÷ 93% (without condensate).
- Stocking temperature: -10°C ÷ +50°C.

MECHANICAL FEATURES

Weight: 2 Kg

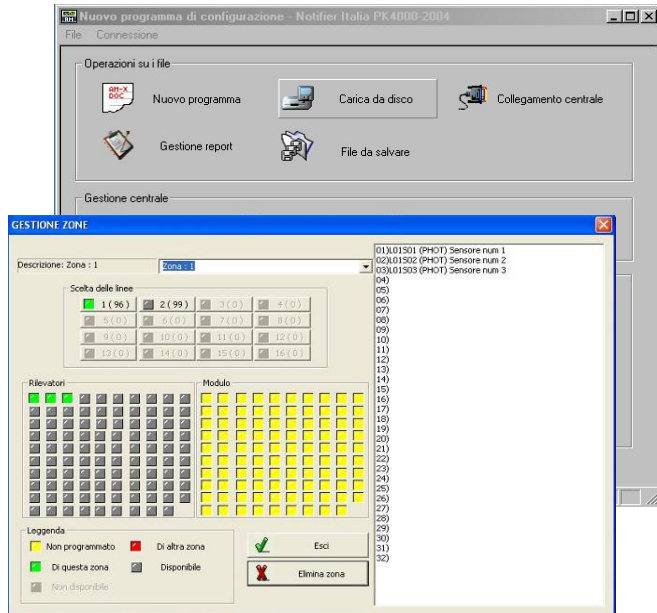
Dimensions:



PK4000

PK4000 is a PC software for AM4000 control panel support, and allows to:

- Transfer and show control panel's programming on PC
- Transfer programs from PC to the control panel
- Create and manage a file-archive with configurations editable in any moment and transferable to a control panel



The programming functions that can be realized by using this software are the same the user can carry out working on the control panel. PK software is Windows XP compatible. The communication between control panel and PC is realized through RS232 serial port.

OPTIONAL BOARDS

SIB600W:

Microprocessor-based communication board for new concentration system. SIB600W is equipped of 1 Ethernet port (LAN TCP/IP), 1 USB port for PC and printer. SIB600W is linkable with all compatible external devices.

SIB600-OEM:

Microprocessor-based communication board, endowed with an RS232/485 output for connection with NOTI-FIRE-NET-2000N with CEIABI protocol or MODBUS on request (only for fire system).

LCD PANELS REPEATER

Remote panels with LCD display for **NOTIFIER AM Series** remote panel management.

Panels and annunciator are endowed with backlit graphic LCD display 320x240 dots. Repeaters are characterized by high brightness and contrast that assure clear sight in any light environment condition. The connection with panels is performed by RS-485 port.

LCD6000N

Fire repeater.

LCD6000N is endowed with seven keys that allow navigation through different menus displayed and execution of system management functions: silent, reset, disablement and lamp test.



LCD6000A

Zone programmable repeater.



LCD6000A shows active panel events with relating devices or zones. The zone displayed are configured by PC with PK software.

Honeywell